

GATHER Gear Pumps Series 3

GATHER
INDUSTRIE

GATHER's Series 3 gear pump is our new process pump with flow rates up to 4000 l/h.

- Delivery and circulation of lubricating and non-lubricating liquids such as water, aqueous solutions, salt solutions, solvents as well as acids and alkalis with long service life for numerous industries and applications.



Technical Data

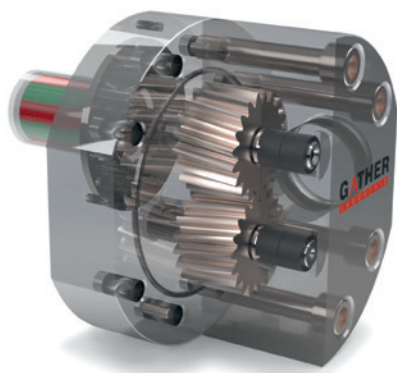
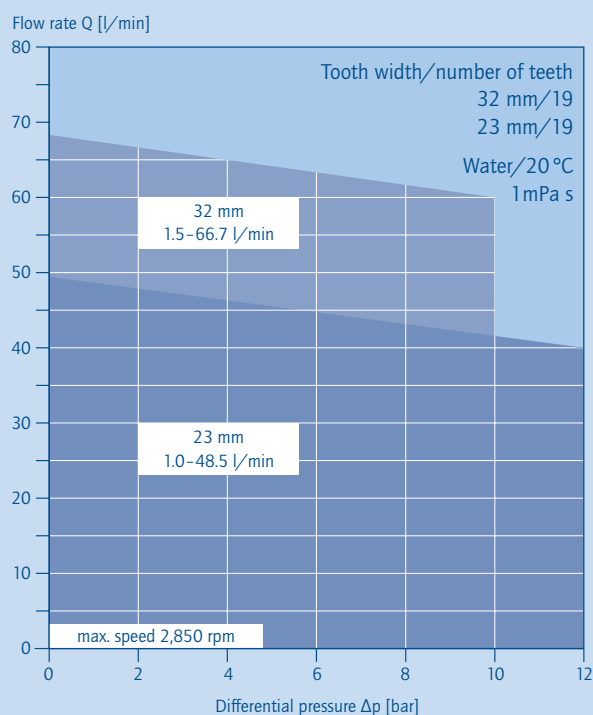
Flow rate	Q = 60–4,000 l/h
Gear widths	23 mm/19 gears (17.1 ml/U) 32 mm/19 gears (23.8 ml/U)
Temperature range	T = -60 to +300 °C
Viscosity	η = 0.1 to 2,000 mPa s (cP)
Differential pressure	Δp = up to 12,0 or 10,0 bar
System pressure	p_{sys} = up to 100 bar

Materials

Pump housing	Stainless steel (1.4404)
Shafts	Stainless steel (1.4571, DLC-coated)
Magnet system	„2G“ (approx. 13 Nm)
Magnetic cap	Hastelloy (2.4819/C-276)
Gears	Waukesha 88, PEEK, ZX-530
Bearings	Carbon, PEEK, ZX-530
O-Rings	PTFE, FFKM, FEP, EPDM etc.
Connections	G 1 ½ and NPT 1 ½" female thread or flanges
ATEX	Ex II 2G Ex h IIC T1...T6 Gb



Pumping characteristic Series 3



Series 3: Transparent presentation

Precise Pump Technology for Non-Lubricating Liquids



Series 3

Special Properties

Magnetic coupling – hermetically sealed

- Wear and maintenance-free without any leakage of the medium

Cooling of slide bearings by internal circulation

- Internal circulation of liquids through flush drillings and channels for cooling and producing a sliding film in the bearings

Pulsation-free delivery

- Speed-dependent delivery characteristics with pulsation-free flow rate

Non-lubricating liquids

- Use of chemically resistant and high-precision manufactured pump materials (stainless steel, Hastelloy, titanium, etc.)

Robust design and long service life

- ... due to magnetic coupling, internal circulation, precise manufacturing and pump design in double disc form

CIP-capable

- Rinsing and cleaning processes in the installed state (Cleaning in Place/CIP)

NEW – SERIES 3

- Delivery of non-lubricating liquids up to 4000 l/h

Our sales engineers and partners have extensive expertise and application knowledge and are your contact persons. Either on-site at your premises or at our headquarters in Wülfrath.

Depending on the customer-specific application and liquid to be handled we will be happy to advise you.

With the right component design as well as selection of materials and seals we will find your individual solution. Durable and robust. Please contact us!

www.gather-industrie.com