

Standard – Quick-Disconnect Coupling of Series STT

DN 32 to DN 60 (NPT)

Non shut-off version

Technical data of Series STT				
Series	Nominal diameter	Permissible operating pressure [bar]*		
		MS	MS/ST	VA
STT10	DN 32	115	185	150
STT12	DN 40	95	150	170
STT16	DN 50	95	150	100
STT20	DN 60	60	100	-

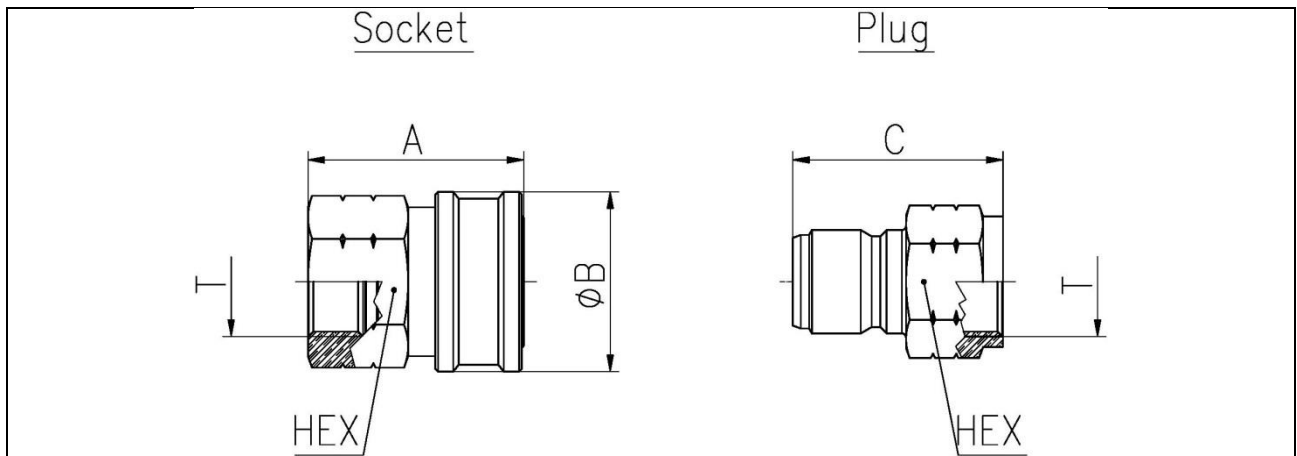
MS = brass, MS/ST = socket brass / plug steel,

VA = stainless steel

*static, coupled at 20° C

Options	
Materials	Seals
<ul style="list-style-type: none"> · Stainless steel (1.4305) · Steel zinc plated (plug) · Brass passivated 	<ul style="list-style-type: none"> · NBR · FPM · EPDM · CR · FVMQ · PTFE · FFKM · etc. (also FDA-compliant)
Temperature range	
-80°C to +325°C (depending on type of seal)	

Coupling series ST is of extremely robust design. It proves especially useful if the flow of highly viscous media (e.g. grease) and must be ensured that a shut-off function is not required.



Dimensions Series STT								
Series	T Thread *	A [mm]	B [mm]	C [mm]	Width across flats			
					Socket		Plug	
					[°]	[mm]	[°]	[mm]
STT10	1 1/4	62	64	59	2	50,8	2	50,8
STT12	1 1/2	73	80	73	2 5/8	66,8	1 1/4	57,2
STT16	2	79	95	77	3	76,2	2 3/4	69,9
STT20	2 1/2	87	114	86	3 1/2	88,9	3 1/4	82,6

Subject to technical alterations, errors and misprints excepted

* Chart for NPT

