

Standard – Quick-Disconnect Coupling of Series STT

DN 4 to DN 25 (NPT)

Non shut-off version

Technical data of Series STT				
Series	Nominal diameter	Permissible operating pressure [bar]*		
		MS	MS/ST	VA
STT1	DN 4	190	230	290
STT2	DN 6	355	375	515
STT3	DN 10	190	290	430
STT4	DN 12	150	240	245
STT6	DN 20	115	145	205
STT8	DN 25	90	135	135

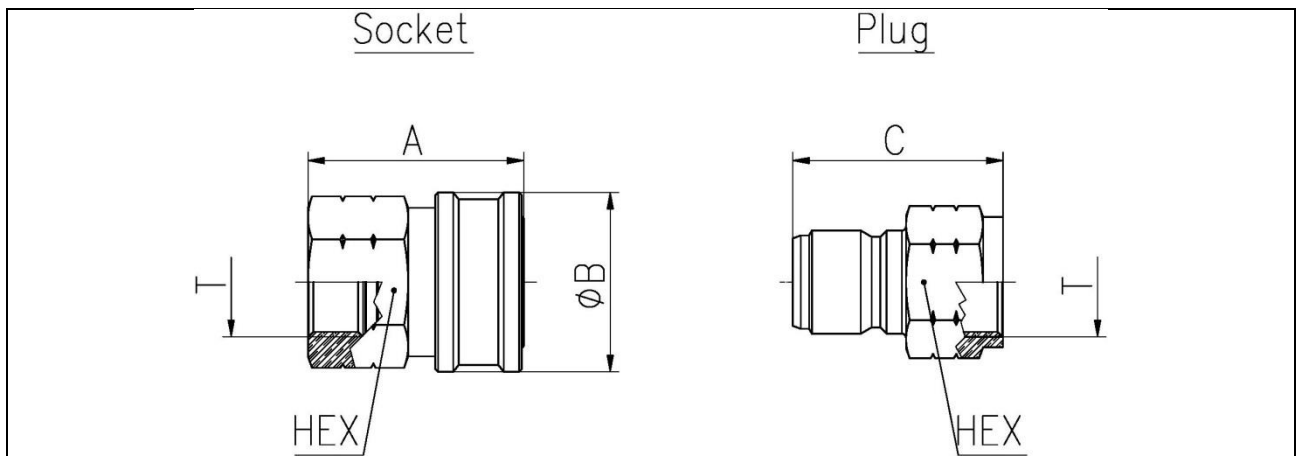
MS = brass, MS/ST = socket brass / plug steel,

VA = stainless steel

*static, coupled at 20° C

Options	
Materials	Seals
<ul style="list-style-type: none"> · Stainless steel (1.4305) · Steel zinc plated (plug) · Brass passivated 	<ul style="list-style-type: none"> · NBR · FPM · EPDM · CR · FVMQ · PTFE · FFKM · etc. (also FDA-compliant)
Temperature range -80°C to +325°C (depending on type of seal)	

Coupling series ST is of extremely robust design. It proves especially useful if the flow of highly viscous media (e.g. grease) and must be ensured that a shut-off function is not required.



Dimensions Series STT								
Series	T Thread *	A [mm]	B [mm]	C [mm]	Width across flats			
					Socket		Plug	
					["]	[mm]	["]	[mm]
STT1	1/8	27	18	25	9/16	14,3	1/2	12,7
STT2	1/4	38	25	37	13/16	20,6	11/16	17,5
STT3	3/8	40	30	41	1	25,4	13/16	20,6
STT4	1/2	49	34	49	1 1/8	28,6	1	25,4
STT6	3/4	52	44	51	1 7/16	36,5	1 3/16	30,2
STT8	1	59	52	56	1 3/4	44,5	1 9/16	39,7

Subject to technical alterations,
errors and misprints excepted

* Chart for NPT

